

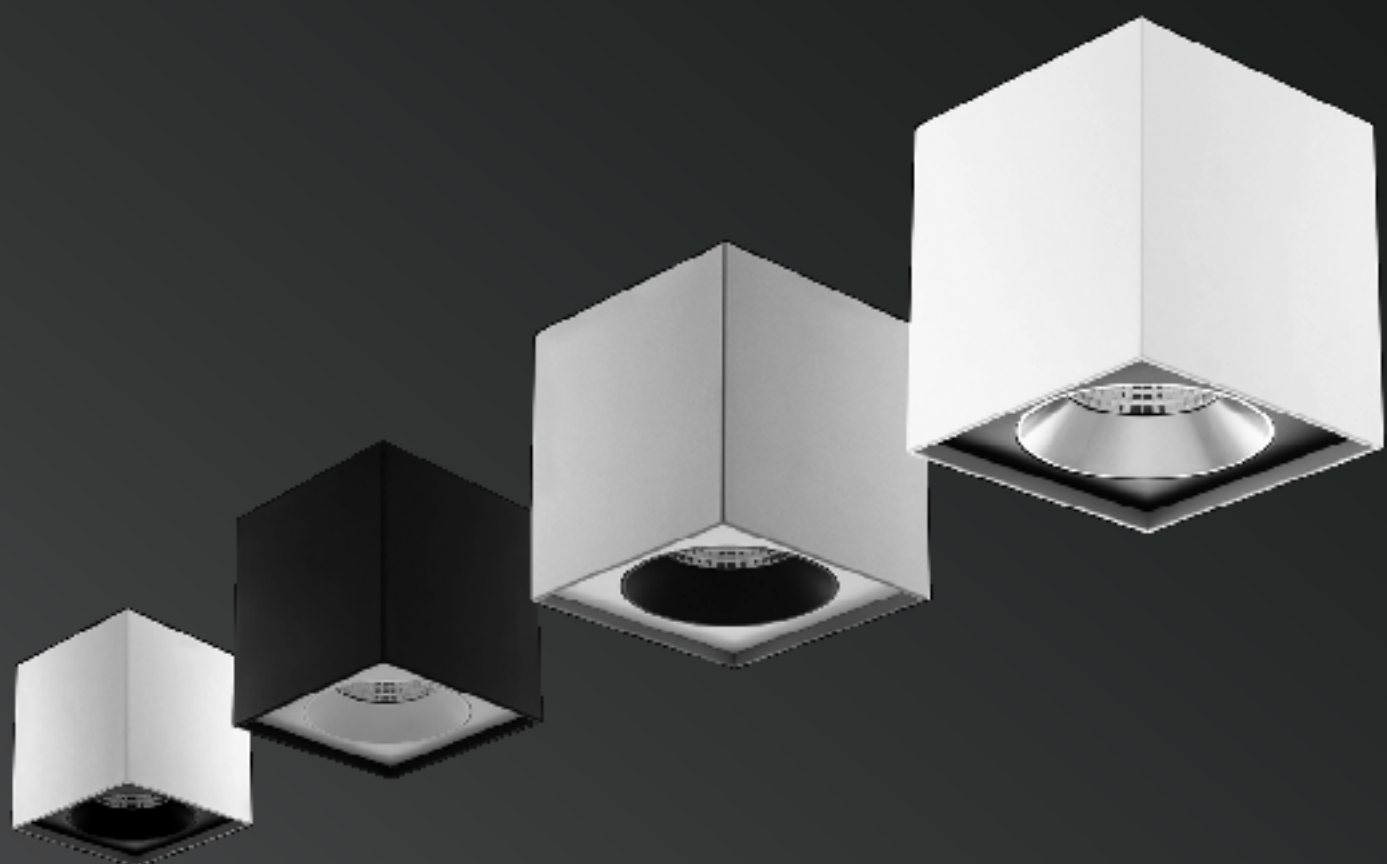
AEG

COMMERCIAL
LUMINAIRES 2018



AEG

NEXT LEVEL
LIGHTING



PRODUCT PORTFOLIO

DARKLIGHT DOWNLIGHT SERIES

premium luminaire design | low-glare LED chip | variety of darklight reflector effects for architectural integration | highly customizable configuration

DSF | FIXED

DSF-07s (A21007s)
7 1/2" (188 mm)
Cutout: 75 mm
21 K (20 K) LED
RA80 (91) VVVO
30° (20°) 40°
PSU 21s



DSA | ADJUSTABLE

DSA-07s (A21007s)
7 1/2" (188 mm)
Cutout: 75 mm
21 K (20 K) LED
RA80 (91) VVVO
30° (20°) 40°
PSU 21s



DSF-10s (A21010s)
10 1/2" (271 mm)
Cutout: 100 mm
21 K (20 K) LED
RA80 (91) VVVO
30° (20°) 40°
PSU 112 (s) 1s



DSA-10s (A21010s)
10 1/2" (271 mm)
Cutout: 100 mm
21 K (20 K) LED
RA80 (91) VVVO
30° (20°) 40°
PSU 112 (s) 2s



DSF-12s (A21012s)
12 1/2" (318 mm)
Cutout: 125 mm
21 K (20 K) LED
RA80 (91) VVVO
30° (20°) 40°
PSU 112 (s) 1s



DSA-12s (A21012s)
12 1/2" (318 mm)
Cutout: 125 mm
21 K (20 K) LED
RA80 (91) VVVO
30° (20°) 40°
PSU 112 (s) 1s



DSF-A12s (A21A12s)
12 1/2" (318 mm)
DSF-A12s (A21A12s) 2s
Cutout: 125 mm
21 K (20 K) LED
RA80 (91) VVVO
30° (20°) 40°
PSU 112 (s) 1s



DSA-A12s (A21A12s)
12 1/2" (318 mm)
DSA-A12s (A21A12s) 2s
Cutout: 125 mm
21 K (20 K) LED
RA80 (91) VVVO
30° (20°) 40°
PSU 11s



DSW | WALL WASHER

DSW-10s (A21010s)
10 1/2" (271 mm)
Cutout: 100 mm
21 K (20 K) LED
RA80 (91) VVVO
NPL - NON-REFLECTING
PSU 112 (s) 1s



DSW-12s (A21012s)
12 1/2" (318 mm)
Cutout: 125 mm
21 K (20 K) LED
RA80 (91) VVVO
NPL - NON-REFLECTING
PSU 112 (s) 1s



DSW-A12s (A21A12s)
12 1/2" (318 mm)
DSW-A12s (A21A12s) 2s
Cutout: 125 mm
21 K (20 K) LED
RA80 (91) VVVO
NPL - NON-REFLECTING
PSU 112 (s) 1s



SURFACE MOUNTED DOWNLIGHTS

high-class, low-glare | LED chip | variety of darklight reflector effects | custom finish on request

SMR | ROUND

SMR-10s (E21010s)
10 1/2" (271 mm)
21 100 x H 170 mm
21 K (20 K) LED
RA80 (91) VVVO
30° (20°) 40°
PSU 112 (s) 1s



SMR-12s (E21012s)
12 1/2" (318 mm)
21 100 x H 170 mm
21 K (20 K) LED
RA80 (91) VVVO
30° (20°) 40°
PSU 112 (s) 1s



SMR-A12s (E21A12s)
12 1/2" (318 mm)
SMR-A12s (E21A12s) 2s
21 100 x H 170 mm
21 K (20 K) LED
RA80 (91) VVVO
30° (20°) 40°
PSU 112 (s) 1s



SMS | SQUARE

SMS-10s (E21010s)
10 1/2" (271 mm)
L 100 x W 100 x H 100 mm
21 K (20 K) LED
RA80 (91) VVVO
30° (20°) 40°
PSU 112 (s) 1s



SMS-12s (E21012s)
12 1/2" (318 mm)
L 125 x W 125 x H 100 mm
21 K (20 K) LED
RA80 (91) VVVO
30° (20°) 40°
PSU 112 (s) 1s

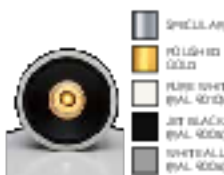


SMS-A12s (E21A12s)
12 1/2" (318 mm)
SMS-A12s (E21A12s) 2s
L 125 x W 125 x H 100 mm
21 K (20 K) LED
RA80 (91) VVVO
30° (20°) 40°
PSU 112 (s) 1s



DARKLIGHT REFLECTORS

4 steps for use for select architect of site region



WALL LUMINAIRE TWIN

Two-way wall luminaire for wall

WTL-06s (E21006s)
2 x 6 1/2" (2 x 165 mm)
2 1/4" x L 230 mm
21 K (20 K) LED
RA80 (91) VVVO
30° (20°) 40°
PSU 1



WALL LUMINAIRE SQUARE

adjustable luminaire for wall and high reflector

WLA-10s (E21010s)
2 x 10 1/2" (2 x 271 mm)
5 1/4" x L 230 mm
20 K (18 K)
RA80
NPL - NON-REFLECTING
PSU 1



PENDANT LUMINAIRE

darklight design | lighting without glare

PLP-06s (L21006s)
6 1/2" (165 mm)
2 1/4" x L 180 mm
21 K (20 K) LED
RA80 (91) VVVO
30° (20°) 40°
PSU 112 (s)



LED DRIVERS / DIMMING OPTIONS

See page 124 for product-specific dimming options

- PSU 1 SWITCHABLE
- PSU 2 PHASE CUT
- PSU 3 PHASE CUT + 1-10 V
- PSU 4 1-10 V
- PSU 5 DALI

SHIFT-LUX DOWNLIGHT SERIES

compact and high-end design | best of adjustable & wall washer downlight | LED module included

SRF | FIXED - ROUND

SRF-A10s (A21A10s)
7 1/2" (188 mm)
SRF-A10s (A21A10s) 2s
10 1/2" (271 mm)
Cutout: 80 mm
21 K (20 K) LED
RA80 (91) VVVO
30° (20°) 40°
PSU 112 (s) 1s



SSF | FIXED - SQUARE

SSF-A10s (A21A10s)
7 1/2" (188 mm)
SSF-A10s (A21A10s) 2s
10 1/2" (271 mm)
Cutout: 80 x 90 mm
21 K (20 K) LED
RA80 (91) VVVO
30° (20°) 40°
PSU 112 (s) 1s



PIN-HOLE / KEYHOLE DOWNLIGHTS

4-step low-glare illumination | soft cut-off design

PRF | PIN-HOLE - FIXED

PRF-A10s (E21A10s)
7 1/2" (188 mm)
PRF-A10s (E21A10s) 2s
10 1/2" (271 mm)
Cutout: 80 mm
21 K (20 K) LED
RA80 (91) VVVO
30° (20°) 40°
PSU 112 (s) 1s



SRA | ADJUSTABLE - ROUND

SRA-A10s (A21A10s)
7 1/2" (188 mm)
SRA-A10s (A21A10s) 2s
10 1/2" (271 mm)
Cutout: 80 mm
21 K (20 K) LED
RA80 (91) VVVO
30° (20°) 40°
PSU 112 (s) 1s



SSA | ADJUSTABLE - SQUARE

SSA-A10s (A21A10s)
7 1/2" (188 mm)
SSA-A10s (A21A10s) 2s
10 1/2" (271 mm)
Cutout: 80 x 90 mm
21 K (20 K) LED
RA80 (91) VVVO
30° (20°) 40°
PSU 112 (s) 1s



KRA | KEYHOLE - ADJUSTABLE

KRA-A10s (E21A10s)
7 1/2" (188 mm)
KRA-A10s (E21A10s) 2s
10 1/2" (271 mm)
Cutout: 80 mm
21 K (20 K) LED
RA80 (91) VVVO
30° (20°) 40°
PSU 112 (s) 1s



SRW | WALL-WASHER - ROUND

SRW-A10s (A21A10s)
7 1/2" (188 mm)
SRW-A10s (A21A10s) 2s
10 1/2" (271 mm)
Cutout: 80 mm
21 K (20 K) LED
RA80 (91) VVVO
NPL - NON-REFLECTING
PSU 112 (s) 1s



SSW | WALL-WASHER - SQUARE

SSW-A10s (A21A10s)
7 1/2" (188 mm)
SSW-A10s (A21A10s) 2s
10 1/2" (271 mm)
Cutout: 80 x 90 mm
21 K (20 K) LED
RA80 (91) VVVO
NPL - NON-REFLECTING
PSU 112 (s) 1s



LMR | COB LED-MODULE

LMR-A10s (A21A10s)
7 1/2" (188 mm)
LMR-A10s (A21A10s) 2s
10 1/2" (271 mm)
Cutout: 80 mm
21 K (20 K) LED
RA80 (91) VVVO
NPL - NON-REFLECTING
PSU 112 (s) 1s



OPTIONS & ACCESSORIES



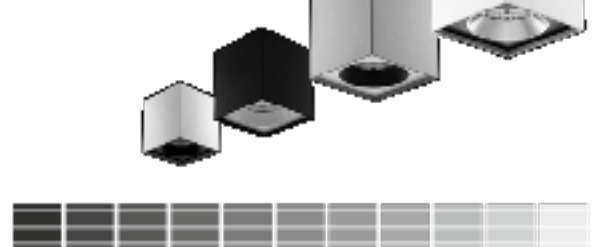
OPTICAL ACCESSORIES

glare-reduction | diffusion | light effects



CUSTOM FINISH OPTIONS

all RAL color combinations | custom color on request



RECESSED DOWNLIGHT RF-SERIES

high quality led | 18°-27° beam angle | high performance | good effect

RF-S-04 (2x100lm)
Cutout Ø 100 mm
7 W | 800 lm
27° x 120° x 40°
R480
100°
PSU 112 (4)



RECESSED DOWNLIGHT BASIC SERIES

modern & general lighting solution | wide beam angle for ambient lighting

RF-B-04 (2x100lm)
Cutout Ø 100 mm
7 W | 800 lm
30° x 120°
R480
100°
PSU 112



RF-B-04 (2x100lm)
Cutout Ø 100 mm
7 W | 800 lm
30° x 120°
R480
100°
PSU 112



RF-B-04 (2x100lm)
Cutout Ø 100 mm
7 W | 800 lm
30° x 120°
R480
100°
PSU 112 (4)



RF-B-04 (2x100lm)
Cutout Ø 100 mm
7 W | 800 lm
30° x 120°
R480
100°
PSU 112 (4)



RECESSED DOWNLIGHT SERIES I

PSU 114W | wide beam & diffusing light for a soft overall luminaire

RF-I-04 (2x100lm)
Cutout Ø 100 mm
10 W | 800 lm
30° x 120°
R480
100°
PSU 112



RF-I-04 (2x100lm)
Cutout Ø 100 mm
10 W | 800 lm
30° x 120°
R480
100°
PSU 112



RF-I-04 (2x100lm)
Cutout Ø 100 mm
10 W | 800 lm
30° x 120°
R480
100°
PSU 112 (4)



RF-I-04 (2x100lm)
Cutout Ø 100 mm
10 W | 800 lm
30° x 120°
R480
100°
PSU 112 (4)



RECESSED DOWNLIGHT SERIES II

high-end general lighting solution | LED-TRIPLE beam for 3x LED examples

RF-II-03 (3x100lm)
Cutout Ø 100 mm
10 W | 800 lm
30° x 120°
R480
100°
PSU 112 (4)

RF-II-03 (3x100lm)
Cutout Ø 100 mm
10 W | 800 lm
30° x 120°
R480
100°
PSU 112 (4)

RF-II-03 (3x100lm)
Cutout Ø 100 mm
10 W | 800 lm
30° x 120°
R480
100°
PSU 112 (4)



RF-II-03 (3x100lm)
Cutout Ø 100 mm
10 W | 800 lm
30° x 120°
R480
100°
PSU 112 (4)

LIGHT PANEL SERIES I

LED-TRIPLE beam high storage | efficient | various installation options

LP-S04 (3x100lm)
Cutout 150x150 mm
30 W | 2400 lm
LP-C04 (3x100lm)
Cutout 150x150 mm
30 W | 2400 lm

LP-M04 (3x100lm)
Cutout 150x150 mm
30 W | 2400 lm

LP-S04 (3x100lm)
Cutout 150x150 mm
30 W | 2400 lm

LP-S04 (3x100lm)
Cutout 150x150 mm
30 W | 2400 lm
R480
100°
PSU 112 (4)



CEILING LIGHT ROUND

PSU 113 (4) | adjustable lighting solution for use | low energy LED | DALI dimmer

CL-R-01 (1x100lm)
Cutout 100 mm
10 W | 800 lm
30° x 120°
R480
100°
PSU 112 (4)



CARDAN'S RECESSED DOWNLIGHTS

wide selection of beam angle | easy to install | compact design | residential & commercial use

CAS-40 (1x100lm)
Cutout 100x100 mm
10 W | 800 lm



CAS-40 (1x100lm)
Cutout 100x100 mm
3 x 3 W | 2 x 270 lm



CAS-40 (1x100lm)
Cutout 100x100 mm
3 x 3 W | 2 x 270 lm



27° x 120° x 40°
R480 (4°) | 12 W
18° | 30° | 36° | 40°
PSU 112 (4) (4)

CARDAN-M RECESSED DOWNLIGHTS

general design | flexible lighting solution | up to 40° beam angle

CAM-10 (1x100lm)
Cutout 100x100 mm
10 W | 800 lm



CAM-10 (1x100lm)
Cutout 100x100 mm
3 x 3 W | 2 x 270 lm



27° x 120° x 40°
R480 (4°) | 12 W
18° | 30° | 36° | 40°
PSU 112 (4) (4)

CARDAN-L RECESSED DOWNLIGHTS

wide selection of beam angle | flexible lighting solution | up to 40° beam angle

CAL-10 (1x100lm)
Cutout 100x100 mm
10 W | 800 lm



CAL-10 (1x100lm)
Cutout 100x100 mm
3 x 3 W | 2 x 270 lm



CAL-10 (1x100lm)
Cutout 100x100 mm
3 x 3 W | 2 x 270 lm



27° x 120° x 40° | R480 (4°) | 12 W
18° | 30° | 36° | 40° | PSU 112 (4) (4)

OPTI-FOCUS DOWNLIGHT SERIES

3-way adjustability for optimal focus | high performance | compact design

OPF-75 (1x100lm)
Cutout 75 mm
7 W | 700 lm
27° x 30° x 40°
R480 (4°) | 12 W
30° | 36° | 40°
PSU 112 (4)



OPF-100 (1x100lm)
Cutout 100 mm
10 W | 1000 lm



OPF-100 (1x100lm)
Cutout 100 mm
10 W | 1000 lm



OPF-100 (1x100lm)
Cutout 100 mm
10 W | 1000 lm



27° x 30° x 40°
R480 (4°) | 12 W
18° | 30° | 36° | 40°
PSU 112 (4) (4)



TRACK LIGHT SERIES I

high quality track luminaire | adjustable beam angle | DALI

TL-100 (1x100lm)
3 W | 270 lm
TL-100 (2x100lm)
6 W | 540 lm



Head Ø 50 mm
27° x 30° x 40°
R480 (4°) | 12 W
18° | 30° | 36° | 40°
PSU 112 (4) (4)

TL-100 (1x100lm)
3 W | 270 lm
TL-100 (2x100lm)
6 W | 540 lm



Head Ø 50 mm
27° x 30° x 40°
R480 (4°) | 12 W
18° | 30° | 36° | 40°
PSU 112 (4) (4)

TL-100 (1x100lm)
3 W | 270 lm
Head Ø 50 mm
27° x 30° x 40°
R480 (4°) | 12 W
18° | 30° | 36° | 40°
PSU 112 (4) (4)



DESIGN FEATURE / DECORATIVE FRONT INSERTS

wide variety of design options for the front insert only by DALI dimmer control



- FLUORESCENT (DALI-1000)
- JET BLACK (DALI-1000)
- WHITE ALUMINUM (DALI-1000)

CUSTOM LUMINAIRE FINISH

for any general lighting quality and color on any wall



TRACK LIGHT SERIES IV

compact design | high quality luminaire | wide beam angle luminaire

TL-4-100 (1x100lm)
3 W | 270 lm
TL-4-100 (2x100lm)
6 W | 540 lm



Size 100x100 mm
27° x 30° x 40°
R480 (4°)
18° | 30° | 36° | 40°
PSU 112 (4) (4)

TECHNOLOGY HIGHLIGHTS

- High-class, low-glare luminaire designs, enhancing visual performance and comfort
- Energy-efficient, cost-effective solutions for general illumination
- Recessed, surface mounted and pendant luminaires in various shapes, dimensions & lumen packages
- Broad spectrum of retail lighting solutions for bringing out the best in visual merchandising
- Endless options in dimming, controls, emergency packs, optics, decorative accessories and much more
- Myriad of new and upcoming lighting innovations to be revealed soon

As well as offering the benefits of energy efficiency, high reliability and zero maintenance, all AEG luminaires are designed to maximize operational life through accurate thermal management and drive current control.



High-Grade Aluminium heat sink, designed for optimum thermal conductivity

Industry-leading Citizen COB technology

Interchangeable optics & louvers



Replaceable reflectors for architectural integration



Optimized reflectors for an excellent uniform light distribution



365° rotating and 30° tilting

Darklight reflector design enhancing visual performance and comfort



30° cut-off angle



AEG

SHAPING THE FUTURE
OF SOLID STATE LIGHTING





COMPETENCE IN LIGHTING



- High-end specification-grade luminaires and lighting systems for professionals
- Cutting-edge lighting technologies, integrated into timeless fixture designs
- A-brand light engines and drivers combined with premium quality components
- High level of freedom for the lighting designer to customize specifications and product appearance
- Lighting solutions offering unprecedented value for money with up to five years of AEG product warranty
- Accessible and convenient with flexible ordering quantities and short production lead times
- Worldwide deliveries, straight from the AEG assembly line based in Germany



elumi GmbH / Markenvertrieb AEG
Brilliantstr. 1
27442 Gnarrenburg
Germany

Phone: +494765 89-0
E-mail: info@aeg-ledlighting
Web: www.aeg-ledlighting

Wattage and lumen values may vary by +/- 10% due to thermal effects, driver losses, output current tolerances and voltage variations.
Technical specifications are subject to change without notice. AEG is a registered trademark used under license of AB Electrolux (publ).